

Share This: 

FL #AR 92705



The Schimberg Group Inc.

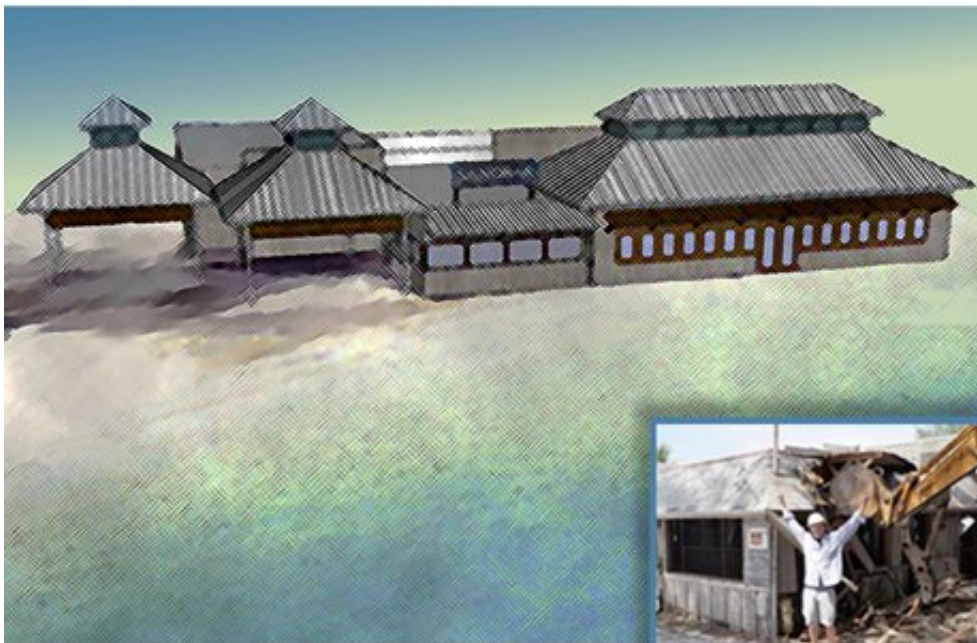
ARCHITECTURE · INTERIOR DESIGN
OWNER REPRESENTATION · LEED CONSULTING

October 2012

www.tsg-fl.com | [TSG-Blog](#)

COLLABORATIVE METHODS
A MONTHLY NEWSLETTER

The Rebuilding of the Sandbar Restaurant is Underway



The new Sandbar Restaurant once completed.

Owner, Ed Chiles, breaks ground.

Dear [member_name_first],

Welcome to the October 2012 edition. This month's newsletter showcases design solutions that The Schimberg Group provides to its clients. The Schimberg Group understands that collaboration is fundamental towards achieving best practices, sustainable success and **Extraordinary Results**.

PRESIDENT'S CORNER:

"Men are afraid to rock the boat in which they hope to drift safely through life's currents, when, actually, the boat is stuck on a sandbar. They would be better off to rock the boat and try to shake it loose."

-Thomas S. Szasz

One of the most popular gathering spots on Anna Maria Island is undergoing a major renovation and truly rocking the boat. [The Sandbar Restaurant](#), which has been serving tourists and locals since 1911, is getting a whole new dining room and bar.

Working with owner Ed Chiles, Contractor [Whitehead Construction](#) and under the direction of Owner Representative, Mark Anderson, the team dealt with FEMA codes, phasing requirements, multiple team member input, interior design and even turtle protection, while keeping the waterfront deck and wedding pavilion open during construction. Unique beachfront restaurants require creative thinking while capitalizing on the location and the environment.

Over the next few weeks, look for more details about The Sandbar renovation project on our blog. In the meantime, check out the [Sandbar's Facebook page](#) to see pictures of the construction work in progress.

*-Barron Schimberg, AIA
LEED AP*

ARCHITECTURE INSIGHTS

A key component of architecture is keeping up with the latest developments in building concepts and materials. Here are two articles that caught my eye in recent weeks:

[Shedding Some Light on Types of Light Bulbs](#)

After describing the differences between incandescent, halogen, and compact fluorescent bulbs and light-emitting diodes, energy-conservation blogger Sarah Battaglia mentions a new [LIFX](#) bulb that can be controlled with your smartphone.

[The Economics of Biophilia: Why Designing with Nature in Mind Makes Economic Sense](#)

This 40-page white paper by the Terrapin Bright Green consulting firm explains why bringing more nature into the built environment can help property owners improve profits. Natural elements that can help reduce absenteeism or increase job performance include access to plants, natural views, water features, courtyards, gardens and daylight.

WHAT'S NEW ON OUR BLOG...

Check out our new blog at our web address: <http://blog.tsg-fl.com>

HOPE TO SEE YOU THERE, TOO!

On October 25th you can spot us at [Light Up Your Life's](#) preview event.

LET US KNOW WHAT YOU THINK

If you have any questions about any of the articles in this newsletter or suggestions for future articles or blog posts, please don't hesitate to contact us at info@tsg-fl.com. We encourage you to add comments on our [blog](#), or connect with us on [Facebook](#), [LinkedIn](#), or [Twitter](#).

We look forward to working with you to create architectural solutions that exceed your expectations.

Sincerely,



Barron Schimberg, AIA
LEED AP

The Schimberg Group, Inc.
Collaborative Methods. Extraordinary Results.

40 South Pineapple Ave. Ste. 101
Sarasota, FL 34236
T.941.894.6888 F. 941.894.6889

[Send to a friend](#)

This email was sent to [% member:email %]. To ensure that you continue receiving our emails, please add us to your address book or safe list.

[manage](#) your preferences | [opt out](#) using TrueRemove®.

Got this as a forward? [Sign up](#) to receive our future emails.

